



# Single hook

mediclinics

EN

Ref. AI0033B/C/CS

Hooks

Medisteel serie

## OVERVIEW

- Single wall-mounted hook.
- Wall-fixing screws that, once installed, are completely concealed.
- Ideal for domestic use or in hotels, restaurants, hospitals, care homes, etc. Suitable for collective facilities.
- Highly resistant to corrosion and extremely durable.
- Wall-fixing screws included.

## TECHNICAL DATA

Cap thickness 3,6 mm

Flange and support arm thickness 0,8 mm

Wall plate thickness 1,6 mm

AI0033C

Stainless Steel AISI 304

Bright

AI0033B

Stainless Steel AISI 304

Black

AI0033CS

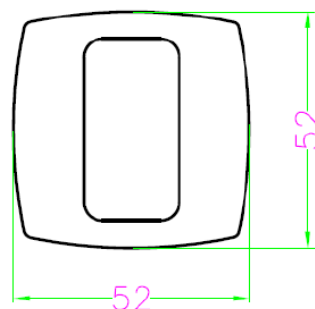
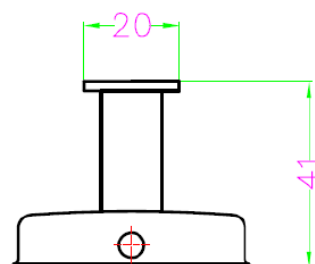
Stainless Steel AISI 304

Satin

## COMPONENTS AND MATERIALS

- **Cap:** ergonomic, welded to the arm.
- **Arm with decorative cover:** fixed to the mounting plate by means of a screw. Fully welded construction.
- **Mounting plate:** wall-mounted using 2 screws.

## DIMENSIONS



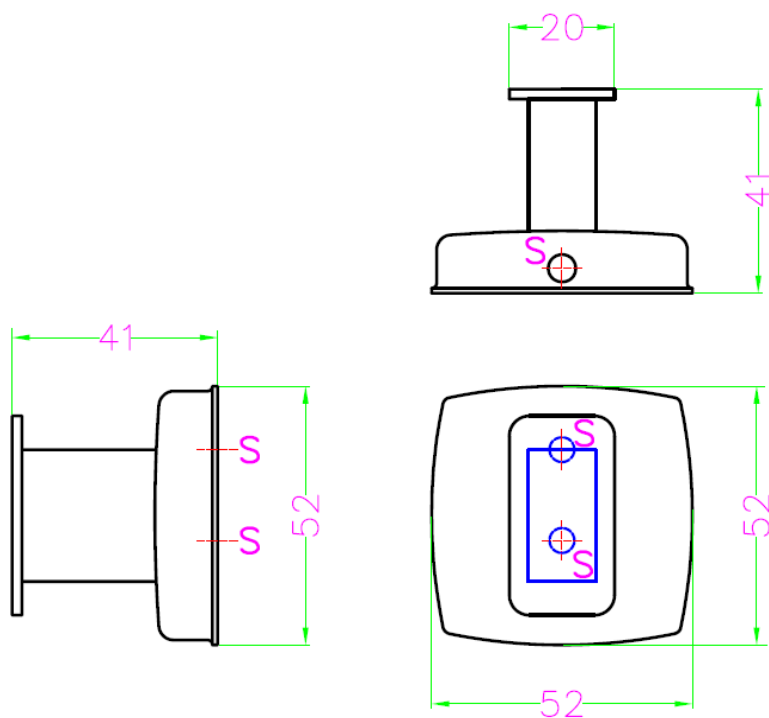
Mediclinics S.A. reserves the right to make changes or modifications to the products and their specifications without prior notice.

## GUIDE SPECIFICATION

Single hook. Manufacture shall be in AISI 304 stainless steel with a black, polished, or satin finish. The single hook shall have a thickness of 3.6 mm. The coat hook shall have a wall support of 0.8 mm, and one wall anchor shall be attached to the support by means of 2 screws.

## ASSEMBLY / RECOMMENDED INSTALLATION HEIGHTS

Fix the mounting plate to the wall using the screws provided through the holes in the plate (points indicated with an "S" in the figure below). Hang the support arm and decorative cover assembly onto the wall mounting plate and tighten the locking screw to secure the unit to the plate.



Mediclinics S.A. reserves the right to make changes or modifications to the products and their specifications without prior notice.