

Straight towel bar

mediclinics

EN

Ref. AI0184B/C/CS

Towel bars

Medisteel serie

OVERVIEW

- Single-bar towel for wall mounting.
- Suitable for the hospitality sector, as bathroom equipment for guest rooms. Model suitable for collective facilities.
- Wall-fixing screws remain concealed.
- Wall-fixing screws included.

TECHNICAL DATA

Ø towel bar 19 mm

Flanges and support arms thickness 0,8 mm

Wall plate thickness 0,8 mm

AI0184C

Stainless Steel AISI 304

Bright

AI014B

Stainless Steel AISI 304

Black

AI0184CS

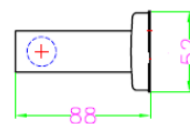
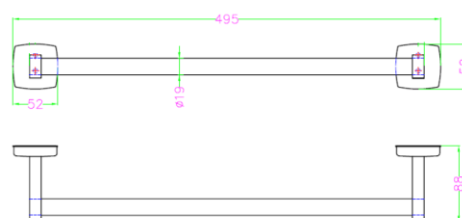
Stainless Steel AISI 304

Satin

COMPONENTS AND MATERIALS

- **Bar:** straight with a cylindrical shape.
- **Arm with decorative cover:** fixed to the mounting plate with a screw. Fully welded construction.
- **Mounting plate:** 2 units attached to the wall using 2 screws.

DIMENSIONS



Mediclinics S.A. reserves the right to make changes or modifications to the products and their specifications without prior notice.

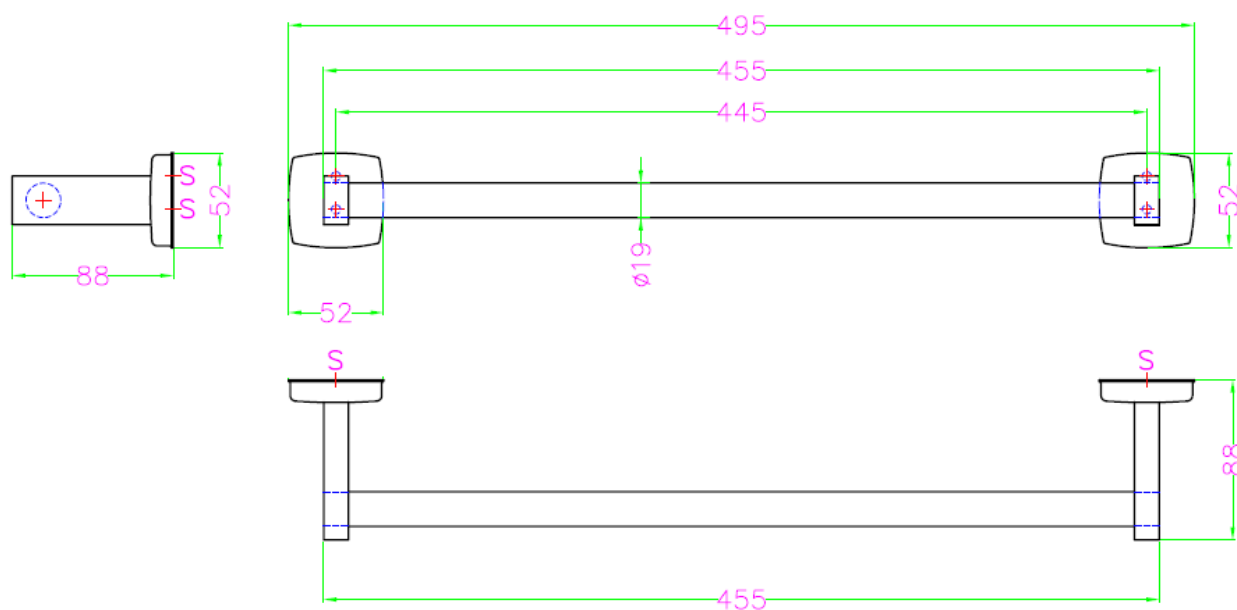
Straight towel bar

GUIDE SPECIFICATION

Bathroom towel rail with a 495 mm long bar. Manufacture shall be in AISI 304 stainless steel with a black, polished, or satin finish. The bar shall have a diameter of 19 mm. The towel rail shall have 2 wall supports of 1.6 mm thickness, and 2 wall anchors shall be attached to the supports by means of screws.

ASSEMBLY / RECOMMENDED INSTALLATION HEIGHTS

Fix the mounting plates to the wall using the screws provided through the holes in the mounting plate (points indicated with an "S" in the figure below). Hang the support arm and decorative cover assembly onto the wall mounting plate and tighten the locking screw to secure the unit to the plate.



Mediclinics S.A. reserves the right to make changes or modifications to the products and their specifications without prior notice.