



# Cabinet with integrated mirror with pictograms for soap, water and paper

**mediclinics**

EN

Empty cabinets

Ref. BTM01

Soap + water + paper

## OVERVIEW

- Hygiene cabinet designed to house automatic soap dispenser, water tap, and paper towel modules. Modules are not included and must be installed by the user.
- The front pictograms for soap, water, and paper towel are backlit with LED lights. The cabinet also features LED backlighting at the bottom.
- Available with a hand-dryer pictogram instead of the hand dryer (model BTM00).
- The door is suspended, lockable, and equipped with 2 pneumatic pistons to facilitate opening and closing.
- 3 Schuko sockets are available to connect the soap dispenser, water tap and a transformer for the LED lights (included). The entire electrical installation is included; only 1 power point is required for all cabinet functions.
- Adjustable fittings and wall mounts are included.

## TECHNICAL DATA

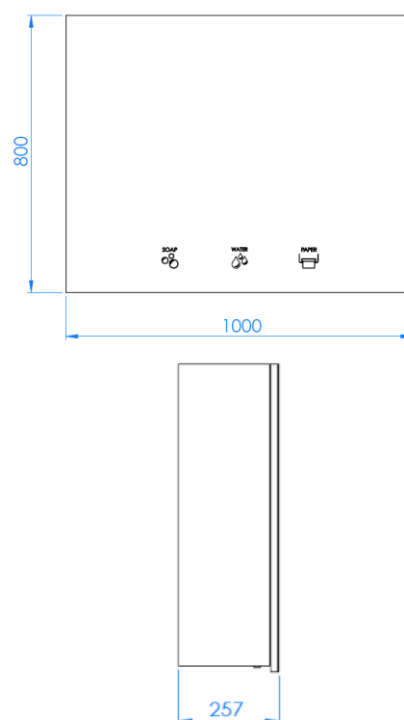
Weight	38 kg
Pictograms light	<10 W
Cabinet backlight	<16 W

BTM01

Moisture-resistant MDF wood

Matte black

## DIMENSIONS



Mediclinics S.A. reserves the right to make changes or modifications to the products and their specifications without prior notice.

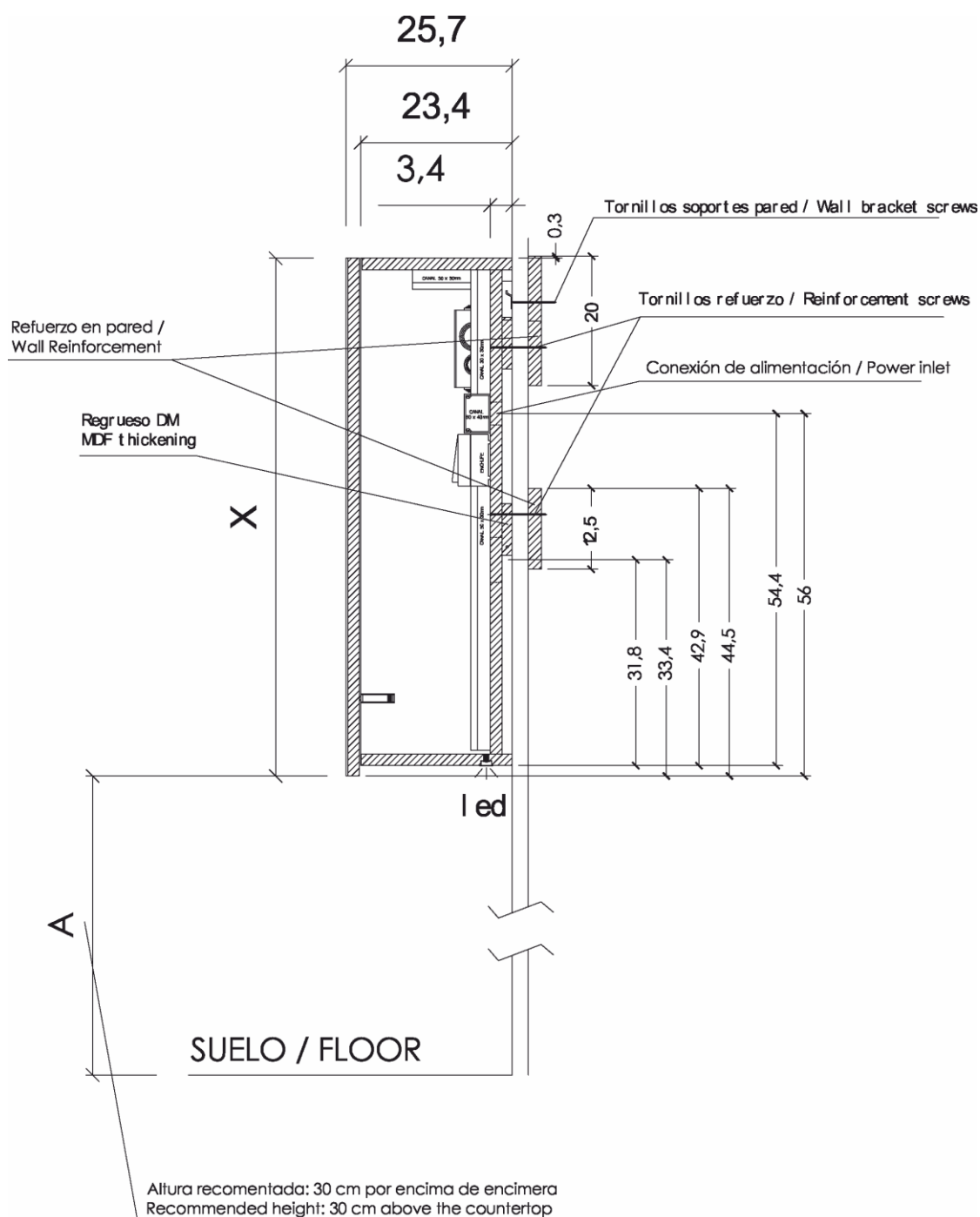
# Cabinet with integrated mirror with pictograms for soap, water and paper



## GUIDE SPECIFICATION

Empty hygiene cabinet consisting of three elements: a soap dispenser, a water tap, and a paper towel dispenser. The cabinet weighs 38 kg. Made of moisture-resistant MDF with a matte black finish and a front mirror door featuring LED pictograms indicating each component, plus LED backlighting at the bottom of the cabinet.

## ASSEMBLY / RECOMMENDED INSTALLATION HEIGHTS



Mediclinics S.A. reserves the right to make changes or modifications to the products and their specifications without prior notice.