

INSTRUCTION&

maintenance instructions



Mono basin filler
with infrared sensor

9631062SMD 04/12/2025



- Hands free infrared sensor activated
- Automatic shut-off water saving flow control.
- Improves water and energy efficiency.
- Easy to use-ideal for disable or elderly.
- Hygienic-reduces risk of cross-contamination.
- Mains and battery powered options included.
- Vandal resistant.
- Easy to fit in new installations or retrofits.
- Self-adjusting to the environments and sensitive to environmental change of light and refraction also detect water wastage.
- Sensor provides faster, more convenient experience, ensuring the tap is never left running.

[illegible]

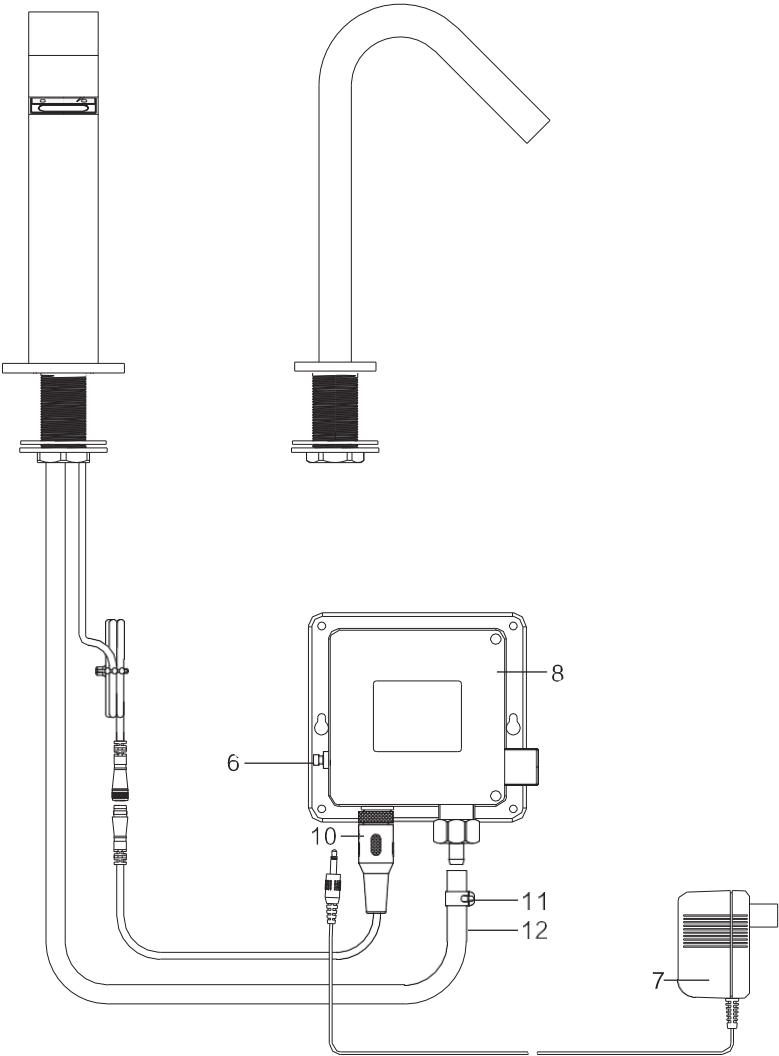
Notes

This image shows a full page of white paper with horizontal dashed lines, typical of primary-ruled notebook paper. The lines are evenly spaced and run across the width of the page. There are no margins, text, or other markings on the paper.

Technical specification

mediclinics

Model No.	GA002AC & GA002AB
Power supply	AC: 220V-240V 50/60Hz DC: 4 AA alkaline batteries (LR06×4)
Water pressure	0.05MPa~0.8MPa
Water temperature	≤75℃
Inlet pipe size	G1/2 (DN15)
Opening and closing time	Open: ≤1s; Close: ≤1.5s
Timeout protection	If used for a long time over 60±10%, the water will be turned off automatically
Sensing distance	25cm±10% (for standard whiteboard)
Power consumption	AC: Standby mode≤2W; Work mode≤4W DC: Standby mode≤0.2mW



- 1.aerator

2.faucet body

3.cover

4.basin

5.nut

6.adjustment button

7.transformer
- 8.control box

10.cable socket

11.buckle

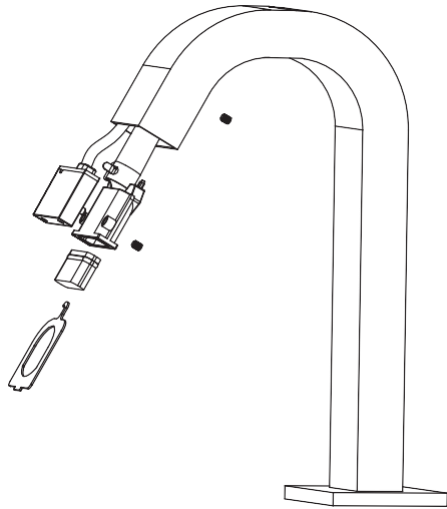
12.inlet

13.outlet

Problem	Cause	Solution
No water out	The batter is exhausted	Change the battery
	Water supply cut off	Check supply
	Dirt in the filter	Clean the filter
	Water pressure to low	Raise the pressure
Water will not turn off	Dirt on the sensor window	Clean the sensor
Too little water flow	Water supply is turned down	Adjust water supply
	The filter is too dirty	Clean the filter
	Water pressure is too low	Raise the pressure
Too much water flow	Water pressure is too high	Adjust pressure
Short cycles of battery	Incorrect batteries	Change to 4AA Alkaline batteries
The indicator light is not on	The light is broken	Change the light or circuit board
	The circuit board is wet or signal line is wet	Dry out
	The battery is exhausted	Change the battery
	Poor connection of battery	Change battery connections

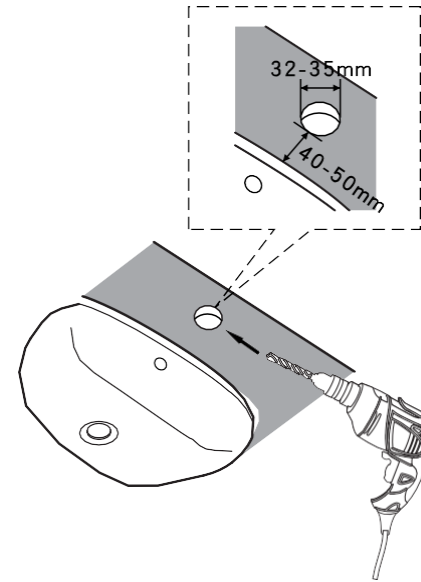
Clean aerator

■ Please ensure the filter is cleaned if the water flow is reduced.

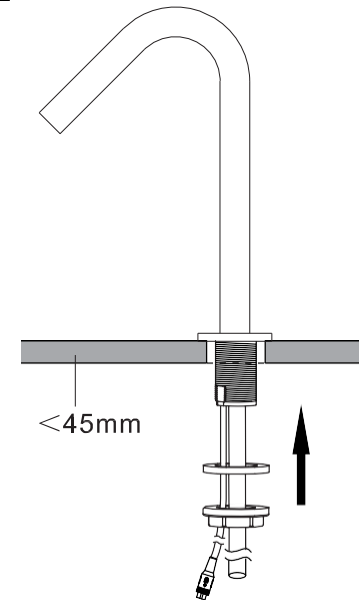


Clean aerator:
(1) Turn off isolating valve. (2) Open and take out filter. (3) Wash filter out and replace.

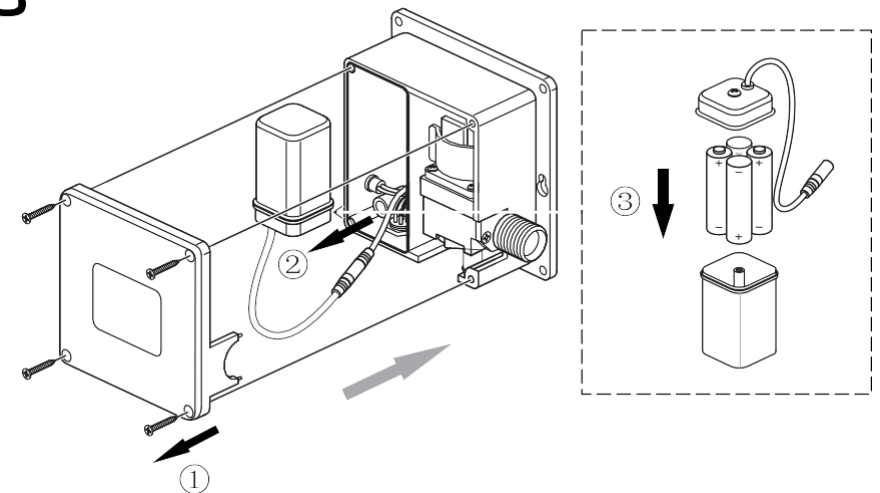
1

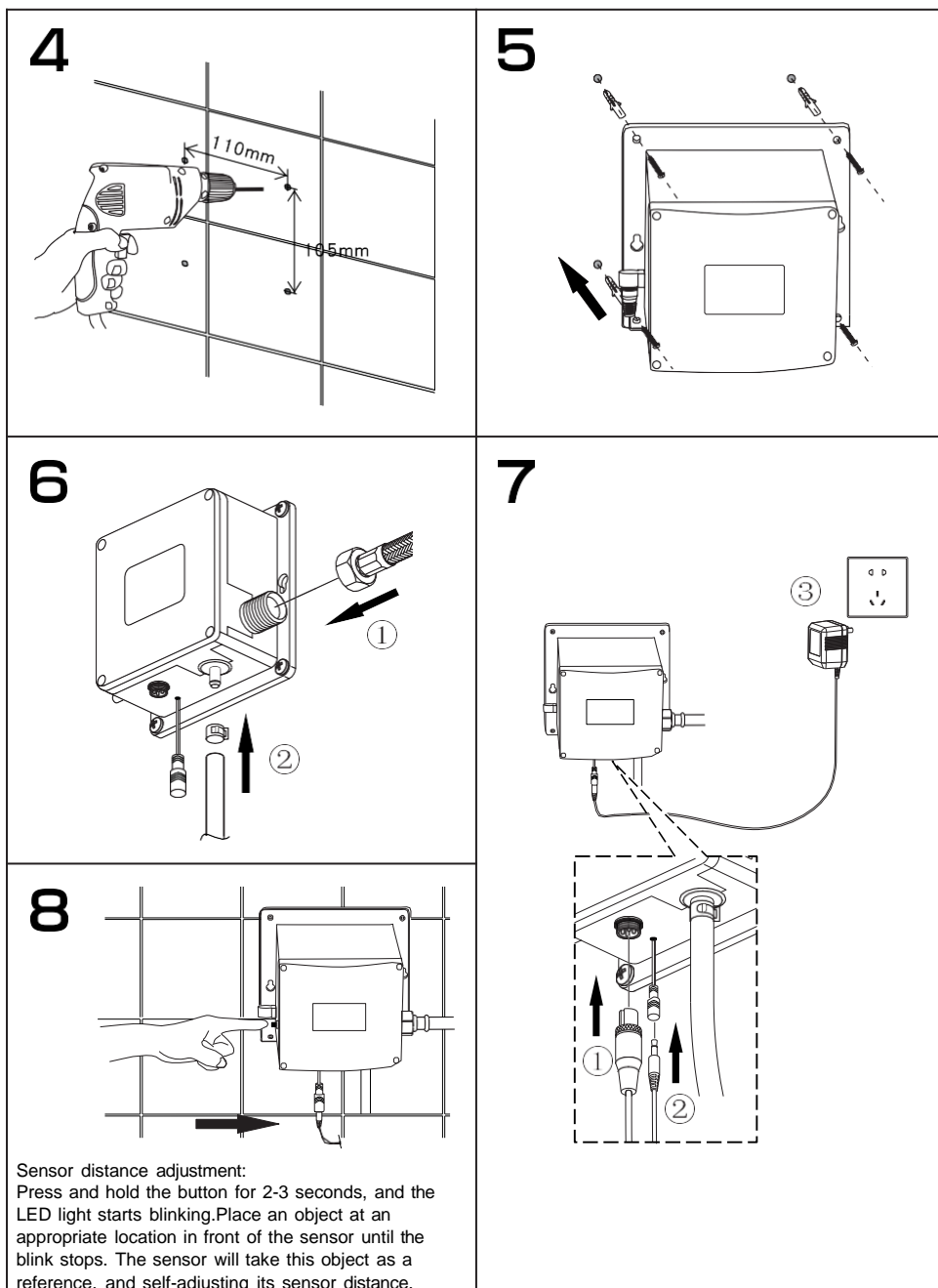


2



3

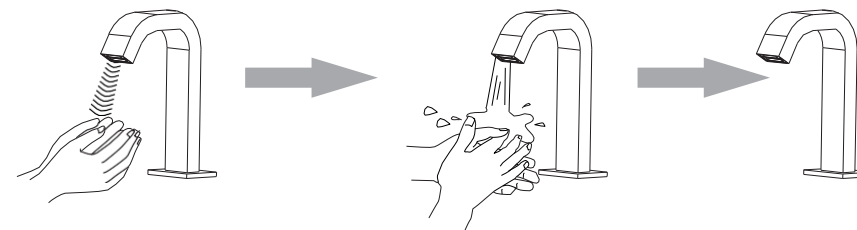




Before use:

During use:

After use:

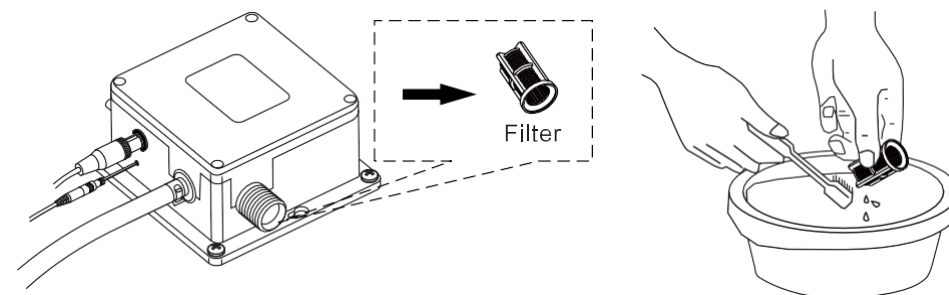


Note: when your hand enters the inductive field the water flows, remove your hand from the field and the water stops. It will stop automatically after flushing 30 seconds continuously, leave your hand from the inductive field for 3 seconds then enter the field to flush again.

Maintain

Clean filter

■ Please ensure the filter is cleaned every 6 months or if the water flow is reduced.



Clean filter:
(1) Turn off isolating valve. (2) Unscrew flex hose. (3) Take out filter. (4) Wash filter out and replace.