



# Cabinet with integrated mirror with pictograms for soap and paper

mediclinics

EN

Empty cabinets

Soap + paper

Ref. BTM11

## OVERVIEW

- Hygiene cabinet designed to house automatic soap dispenser and paper towel modules. Modules are not included and must be installed by the user.
- The front pictograms for soap and paper towel are backlit with LED lights. The cabinet also features LED backlighting at the bottom.
- Available with a hand-dryer pictogram instead of the hand dryer (model BTM10).
- The door is suspended, lockable, and equipped with 2 pneumatic pistons to facilitate opening and closing.
- 2 Schuko sockets are available to connect the soap dispenser and a transformer for the LED lights (included). The entire electrical installation is included; only 1 power point is required for all cabinet functions.
- Adjustable fittings and wall mounts are included.

## TECHNICAL DATA

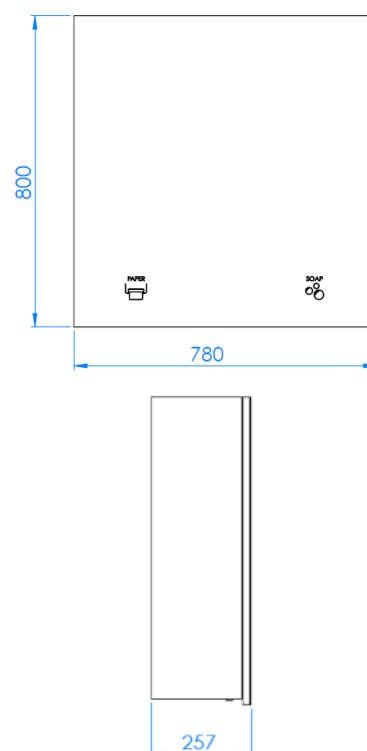
Weight	34,9 kg
Pictograms light	<10 W
Cabinet backlight	<16 W

BTM11

Moisture-resistant MDF wood

Matte black

## DIMENSIONS



Mediclinics S.A. reserves the right to make changes or modifications to the products and their specifications without prior notice.

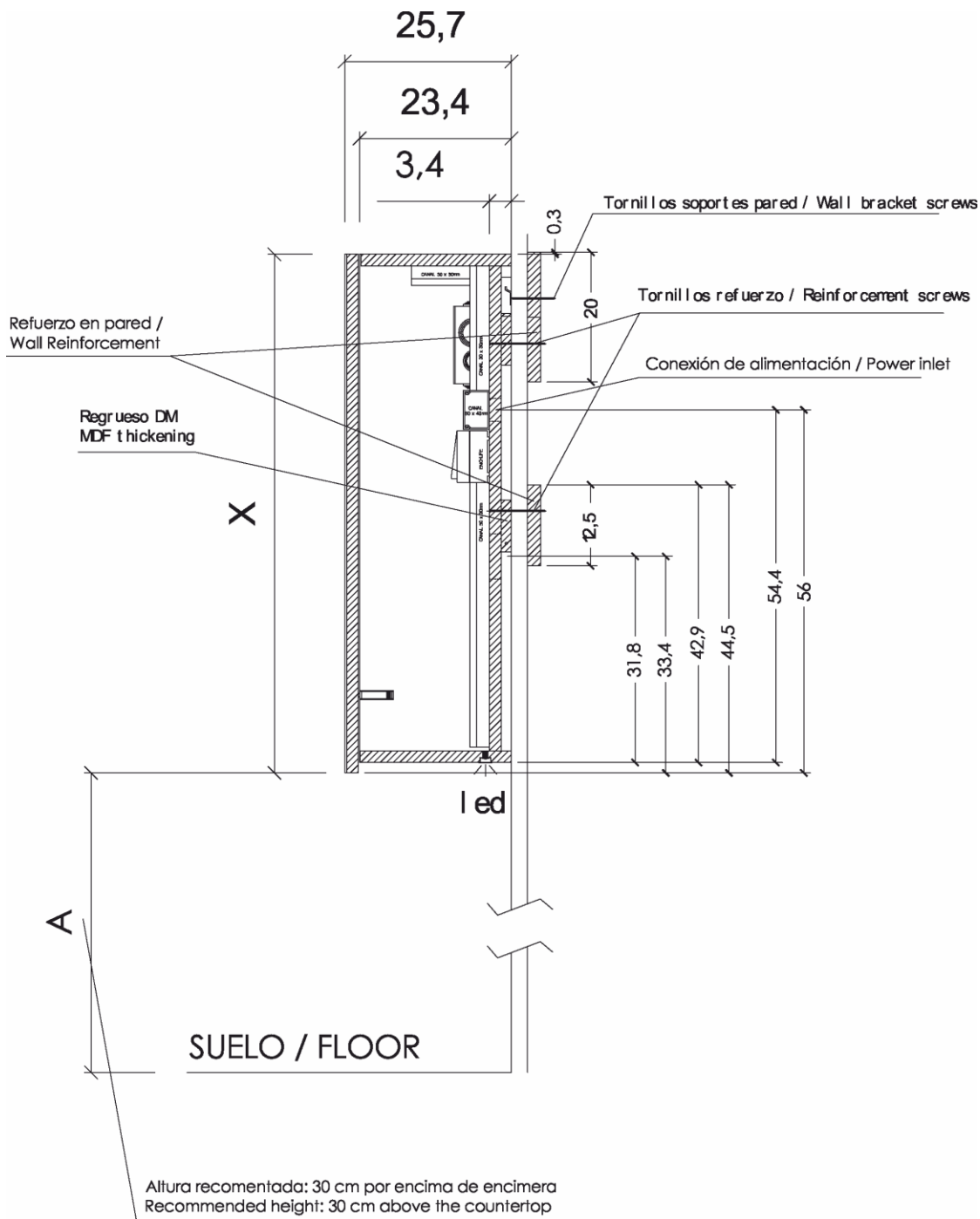
# Cabinet with integrated mirror with pictograms for soap and paper



## GUIDE SPECIFICATION

Empty hygiene cabinet shall consist of two elements: a soap dispenser and a paper towel dispenser. The cabinet shall weigh 34,9 kg. Made of moisture-resistant MDF with a matte black finish and a front mirror door featuring LED pictograms shall indicate each component, plus LED backlighting at the bottom of the cabinet.

## ASSEMBLY / RECOMMENDED INSTALLATION HEIGHTS



Mediclinics S.A. reserves the right to make changes or modifications to the products and their specifications without prior notice.

